

KG420T/KG420TH型露天潜孔钻车

KG420T/KG420TH Surface DTH Drilling Rig

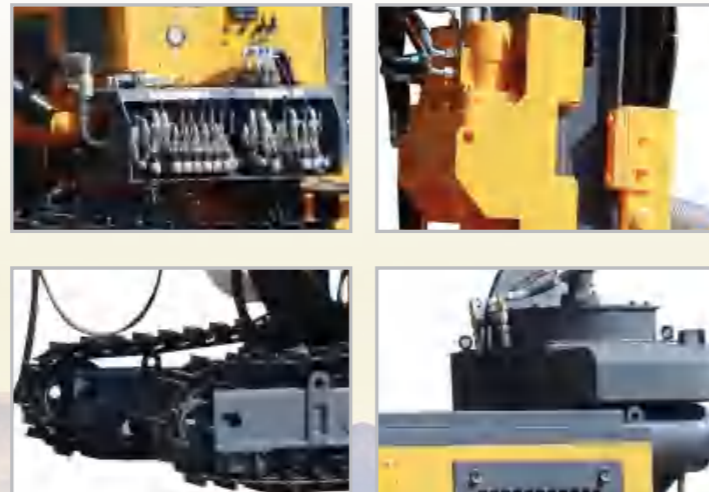


KG420T/KG420TH型露天潜孔钻车是应国家对柴油机排放要求进行升级改进的一款设备。配备有玉柴非道路四缸发动机，满足国家对排放和环保的要求。采用折边履带架和工程四轮一带，增加履带调平，柱塞行走马达，提高工作压力，增大回转扭矩和转速，加大提升油缸和链条，提高提升力和可靠性。罩壳采用加厚型材折边，增加其强度和刚性。增加起吊吊环，方便装卸吊装。

The KG420T/KG420TH surface DTH drilling rig is an improved device in compliance with national regulations on diesel-engine emissions. Equipped with the Yuchai four-cylinder engine, the drill rig meets national standards for emissions and environment. The folding frame track and four-wheel drive are adopted; Add track leveling cylinders and the plunger piston tramming motor improves the working pressure and increase the rotary torque and revolving speed; and the lifting oil cylinder and chain are expanded to promote the lifting force and reliability. The thickened profile folder is used for the housing, thus improving its level of intensity and rigidity; and the additional ring makes handling and lifting convenient.

KG420TH型露天潜孔钻车增加集尘器，工作时更环保、可靠。

The KG420TH surface DTH drilling rig is equipped with a dust collector, thus making operation more environment-friendly and reliable.



▲ **KG420TH型 露天潜孔钻车**
 KG420TH surface DTH drilling rig

技术参数 / Technical Parameters

钻车型号 /Model of drill rig	KG420T	KG420TH
整机重量 /Weight of complete machine	5050KG	5350KG
外形尺寸 /Outer dimensions	5300×2250×2400mm	5300×2450×2400mm
凿岩硬度 /Drilling hardness	f=6-20	
钻孔孔径 /Drilling diameter	Φ90-152mm	
经济钻深 /Depth of economical drilling	25m	
回转转速 /Rotary speed	0-90rpm	
最大回转扭矩 /Rotary torque (Max)	3500N·m (Max)	
提升力 /Lifting force	40KN	
推进方式 /Method of Feed	油缸+滚子链 /Oil cylinder+roller chain	
推进行程 /Feed stroke	3175mm	
行走速度 /Travelling speed	0-2.5km/h	
爬坡能力 /Climbing capacity	≤30°	
离地间隙 /Ground clearance	280mm	
滑架俯仰角度 /Tilt angle of Beam	俯135°仰50°共185°/Down: 135°, up: 50°, total: 185°	
滑架摆动角度 /Swing angle of boom	左100°右45°共145°/Left: 100°, right: 45°, total: 145°	
钻臂俯仰角度 /Pitch angle of drill boom	俯50°仰25°共75°/Down: 50°, up: 25°, total: 75°	
钻臂摆动角度 /Swing angle of drill boom	左44°右45°共89°/Left: 44°, right: 45°, total: 89°	
履带调平角度 /Leveling angle of track	±10°	
滑架补偿长度 /Compensation length of beam	900mm	
配套动力 /Supporting power	玉柴YC4DK80-T302 (58 KW / 2200r/min)KG420T /Yuchai YC4DK80-T302 (58 KW / 2200r/min)KG420T 玉柴YC4DK100-T304 (73.5 KW / 2200r/min)KG420TH /Yuchai YC4DK100-T304 (73.5 KW / 2200r/min)KG420TH	
冲击器 /DTH hammer	4吋/4″	
钻杆 /Drilling rod	Φ76×2m+Φ76×3m	
耗风量 /Air consumption	13-20m³/min	
最高水平孔高度 /Maximum height of horizontal hole	2750mm	
最低水平孔高度 /Minimum height of horizontal hole	350mm	
集尘器 /dust collector	标配 QZA-120 (12滤芯) standard configuration QZA-120 (12 filter element) 选配QZA-140 (16滤芯) alternative configuration QZA-140 (16 filter element)	

备注：当集尘机型钻孔孔径超过Φ130mm，集尘器必须升级加大。

Note: When the hole diameter of the dust collector exceeds 130mm, the dust collector must be upgraded and enlarged.



备注：图片仅供参考

Pictures for reference only, subject to our available products.

▲ 配套空压机方案推荐 /Recommended Air Compressors

柴油移动型螺杆压缩机: KP450-14 CU
 KM570-12/15 YC
 KP650-15/18 YC

Diesel engine portable screw air compressor: KP450-14 CU
 KM570-12/15 YC
 KP650-15/18 YC

注：根据孔径大小及空气管路远近选配空压机

Note: Air compressor selection subject to hole diameter and air hose length