

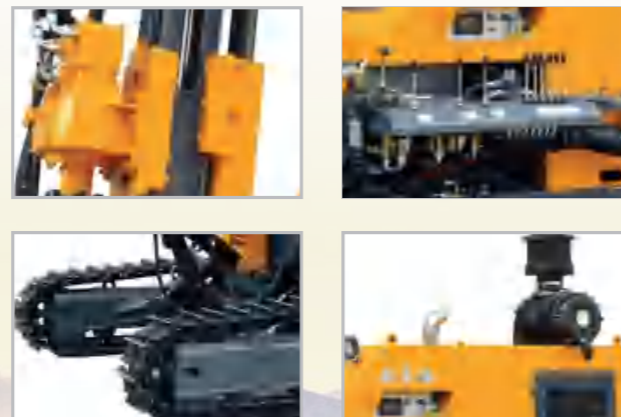
KG200GF型光伏潜孔钻车

KG200GF Photovoltaic Drilling Rig



KG200GF型光伏潜孔钻车配备玉柴四缸发动机，适用于较大孔径光伏基桩、水电工程、露天采矿、道路修建等施工工地钻凿爆破孔作业。配备一体式控制器，实时监控钻车运行参数；行走底盘采用折边履带架和工程四轮一带，具备履带调平功能，配套加强型柱塞行走马达，提高工作压力，增加其爬坡性能；推进梁采用油缸加20A滚子链条推进，上中下配备高耐磨尼龙减磨压板，保证使用寿命，提升钻孔操纵可靠性；大减速比的双马达回转器为钻车提供高达3500Nm以上的回转扭矩，同时对液压系统进行升级，采用高强度大排量铸铁齿轮泵，保证产品质量；罩壳采用加厚型材，增加起吊吊环，方便装卸吊装；钻车具有使用寿命长、产品性能稳定的优势。

The KG200GF photovoltaic drilling rig is equipped with Yuchai four-cylinder engine, which is suitable for drilling blasting holes in construction sites such as photovoltaic pile foundation, hydropower project, open-pit mining and road construction with large aperture. Equipped with integrated controller, real-time monitoring of drilling rigs operating parameters; The walking chassis adopts the folding track frame and the engineering four-wheel belt, which has the function of track leveling, and is equipped with the enhanced plunger walking motor to improve the working pressure and increase its climbing performance. The propulsive beam is propelled by oil cylinder and 20A roller chain. The upper, middle and lower parts are equipped with high wear-resistant nylon anti-wear press plate to ensure the service life and improve the reliability of drilling operation. The double motor gyrator with large reduction ratio provides rotary torque of up to 3500Nm for the drill rigs. At the same time, the hydraulic system is upgraded and the cast iron gear pump with high strength and large displacement is adopted to ensure product quality. The cover shell adopts the thickened profile and the lifting ring is added to facilitate loading and unloading and hoisting. The drilling rigs has the advantages of long service life and stable product performance.



▲ **KG200GF型光伏潜孔钻车**
 KG200GF Photovoltaic Drilling Rig

技术参数 / Technical Parameters

钻车型号 / Model of drill rig	KG200GF
整机重量 / Weight of complete machine	5500Kg
外形尺寸 / Outer dimensions	6250×2260×2600mm
凿岩硬度 / Drilling hardness	F=6-20
钻孔孔径 / Drilling diameter	φ115-203mm
回转转速 / Rotary speed	0-110rpm
最大回转扭矩 / Rotary torque (Max)	≥3500Nm
提升力 / Lifting force	40KN
推进方式 / Method of Feed	油缸+20A滚子链 / oil cylinder +20A roller chain
推进行程 / Feed stroke	3475mm
行走速度 / Travelling speed	0-2.5Km/h
爬坡能力 / Climbing capacity	≤30°
离地间隙 / Ground clearance	325mm
滑架俯仰角度 / Tilt angle of Beam	俯130°仰35°共165°/Down: 130°, up: 35°, total: 165°
滑架摆动角度 / Swing angle of boom	左45°右45°共90°/Left: 45°, right: 45°, total: 90°
钻臂俯仰角度 / Pitch angle of drill boom	俯50°仰15°共65°/Down: 50°, up: 15°, total: 65°
钻臂摆动角度 / Swing angle of drill boom	左42°右38°共80°/Left: 42°, right: 38°, total: 80°
履带调平角度 / Leveling angle of track	±10°
滑架补偿长度 / Compensation length of beam	900mm
工作风压 / Air pressure for work	1-2.4MPa
配套动力 / Supporting power	玉柴DKC2G3 (73.5KW/2200r/min) / YuchaiDKC2G3 (73.5KW/2200r/min)
冲击器/DTH hammer	4-6吋;
钻杆/Drilling rod	φ76×2000mm
耗风量/Air consumption	15-26m ³ /min



▲ 配套空压机方案推荐 / Recommended Air Compressors

柴油移动型螺杆压缩机: KP825-18/21 YC
 Diesel engine portable screw air compressor: KP825-18/21 YC

注: 根据孔径大小及空气管路远近选配空压机
 Note: Air compressor selection subject to hole diameter and air hose length

备注: 图片仅供参考
 Pictures for reference only, subject to our available products.